

ON TOUR



Macbeth

ON TOUR

MACBETH

Written by

William Shakespeare

Adapted and Directed by

H. Brian Humphrey

Play Guide

Prepared by

Lara Marsh

Alan Klem



About This Guide

Shakespeare On Tour celebrates its 15th anniversary in 2020 and we at Nebraska Shakespeare have never been more appreciative of your support and engagement with our work. We have seen the powerful impact and influence this program has on students and audiences across the region. Again and always - thank you.

Shakespeare's plays were created to be experienced through performance. From the stage of the Globe Theatre in London to a school classroom on the plains of Nebraska, Shakespeare's work was meant to be actively engaged on a personal and relatable level. It is only by experiencing Shakespeare's insightful genius through the delivery of performance, no matter how polished or rehearsed, can we truly uncover the humanity, honesty, and humor of his text.

With the health challenges of COVID-19 pandemic, Nebraska Shakespeare is putting the safety of students, educators and our artists first. This means that an alternative to our live version of the *Macbeth* Tour is necessary for 2020. Beginning in October, a Nebraska Shakespeare professional, abridged video production of *Macbeth* specifically staged for students and educators will be available. The 82-minute production will be followed by a live Zoom post-performance discussion with skilled actor/educators creating a customized experience for students and their teachers.

Please contact us with any questions or comments. Your feedback is invaluable to us as we grow our Shakespeare On Tour program in this unprecedented time.

- The staff of Nebraska Shakespeare

MACBETH: PLAY SYNOPSIS



PHOTO: Konrad Case and Bianca Phipps in Shakespeare On The Green's KING JOHN. (Chris Holtmeier)

- After defeating the Norwegian army, Macbeth and Banquo encounter a mysterious sorceress, who prophesizes that Macbeth will be made thane of Cawdor and king of Scotland, and that Banquo will beget a line of Scottish kings, although Banquo will never be king himself.
- The sorceress vanishes, and Malcolm arrives, thanking the two generals for their victory and to tell Macbeth that he has indeed been named thane of Cawdor. Malcolm also informs Macbeth and Banquo that his father, Duncan, the king of Scotland, plans to stay at Inverness, Macbeth's castle, that night. Macbeth writes ahead to his wife, Lady Macbeth, telling her all that has happened.
- When Macbeth arrives at Inverness, Lady Macbeth persuades him to kill the king that very night. While Duncan is asleep, Macbeth stabs him, despite his doubts. Lady Macbeth returns the daggers to the king's chamberlains to frame them for the murder. Macduff arrives to Inverness and discovers Duncan's dead body. Macbeth kills the chamberlains—ostensibly out of rage at their crime—and easily assumes the kingship.
- Duncan's son Malcolm flees to England, fearing that whoever killed Duncan desires their demise as well. Macbeth hires a pair of murderers to kill Banquo and his son Fleance. They ambush Banquo on her way to a royal feast, but they fail to kill Fleance, who escapes into the night.
- Macbeth grows more paranoid upon learning that Fleance escaped. At the feast that night, Banquo's ghost visits Macbeth. When he sees the ghost, Macbeth raves fearfully, startling his guests.

Who's Who

Macbeth

A successful general and the thane of Glamis.

Lady Macbeth

Macbeth's wife, a deeply ambitious and lonely woman.

The Sorceress

A prophetic being, resembling the mythological Fates.

Banquo

A noble soldier and Macbeth's best friend.

King Duncan

The good king of Scotland whom Macbeth, in his ambition for the crown, murders.

Macduff

The thane of Fife who mistrusts Macbeth's rise to power and leads the crusade to unseat him.

MACBETH: PLAY SYNOPSIS



PHOTO: Shaan Sharma, Sam Cheeseman, and Hannah Clark in Shakespeare On Tour's OTHELLO. (Chris Holtmeier)

Who's Who (continued)

Malcolm

The child of Duncan, who flees after her father's murder.

Fleance

Banquo's child, who survives Macbeth's attempt to murder him.

The Murderers

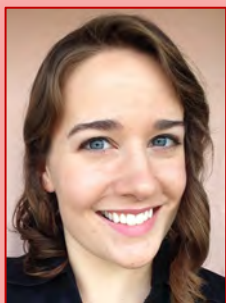
A pair of ruffians hired by Macbeth to murder Banquo, Fleance, and Macduff's family.

Lady Macduff

Macduff's closest kin.

- Frightened, Macbeth goes to visit the sorceress once again. They show him further prophecies: he must beware of Macduff, who opposes Macbeth's accession to the throne; he is incapable of being harmed by anyone born of woman; and he will be safe until Birnam Wood comes to Dunsinane Castle.
- When Macbeth learns that Macduff has fled to England to join Malcolm, he orders that Lady Macduff and her child be murdered.
- Macduff learns of his family's execution in England and vows revenge. Malcolm has succeeded in raising an army in England, and Macduff joins him as he rides to Scotland to challenge Macbeth's forces.
- Lady Macbeth becomes plagued with fits of sleepwalking in which she bemoans what she believes to be bloodstains on her hands. Before Macbeth's opponents arrive, Macbeth receives news that she has killed herself.
- Macbeth, awaiting Malcolm and Macduff, sees the English army advancing on Dunsinane with boughs cut from Birnam Wood. Birnam Wood is indeed coming to Dunsinane, fulfilling half of the sorceress's prophecy.
- On the battlefield, Macbeth encounters the vengeful Macduff, who declares that he was not "of woman born" but was instead "untimely ripped" from his mother's womb. Macduff kills Macbeth.
- Malcolm, now the king of Scotland, declares his benevolent intentions for the country and invites all to see him crowned at Scone as the sorceress adds Macbeth's severed head to her stable of victims.

MEET THE ACTORS/EDUCATORS



Hannah Clark

Hannah earned her BA in English Literature and Theatre from Chadron State College and MFA from Creighton University's in poetry. She's acted in Shakespearian roles including NE Shakes productions *Much Ado*, *King John*, *All's Well*, *Hamlet*, and the touring *Othello*.



James FitzGerald

Jim has been (and is) a professional, regional, actor for 30 years. He is the veteran of over 50 Shakespeare productions, including 8 seasons with the Nebraska Shakespeare Festival.



Maya Lagerstram

Maya is a recent graduate of the University of Minnesota/Guthrie BFA Actors Training Program, with a focus on classical theater. She's extremely passionate about Shakespeare and youth theatre.



Michael Judah

Michael earned a BA at the University of Nebraska/Omaha and a MFA from the FSU/Asolo Conservatory. He has acted in many Shakespeare shows such as *The Taming of the Shrew*, *As You Like It*, and *Romeo and Juliet*.



D. Kevin Williams

D. Kevin Williams is a seasoned actor of over 25 years. His credits are local and regional, including NS and the North Carolina Shakespeare Festival. D. Kevin has an extensive history in leading drama workshops around Nebraska.



Nadia Ra'Shaun Williams

An Omaha native, Nadia has been acting since the age of eight. Venues she has performed include the Nebraska Rep, the Union, and the Denver Center.

ABOUT THIS PRODUCTION

Our production of *Macbeth* was recorded in 2009 in front of a live audience at Marion High School. We thank all performers, designers, the director, sponsors, and of course, Marion High School in assisting Nebraska Shakespeare in accomplishing the telling of this story.



2009 Performers

Banquo/Wounded Sergeant

Malcolm/Murderer 2

Sorceress/handmade/Porter/Old Crone

Macbeth

Duncan/Macduff/Murderer 1

Lady Macbeth

Dakotah Brown

Sean Carlson

Sarah Carlson-Brown

Vincent Carlson-Brown

Brian Frederick

Maria Vacha

2009 Production Team

Director, Script Adaptation

Stage Manager, Props Master

Fight Choreographer

Set Designer

Costume Designer

Tour Manager

Video Production

A. Bryan Humphrey

Wesley A. Houston

Terry Doughman

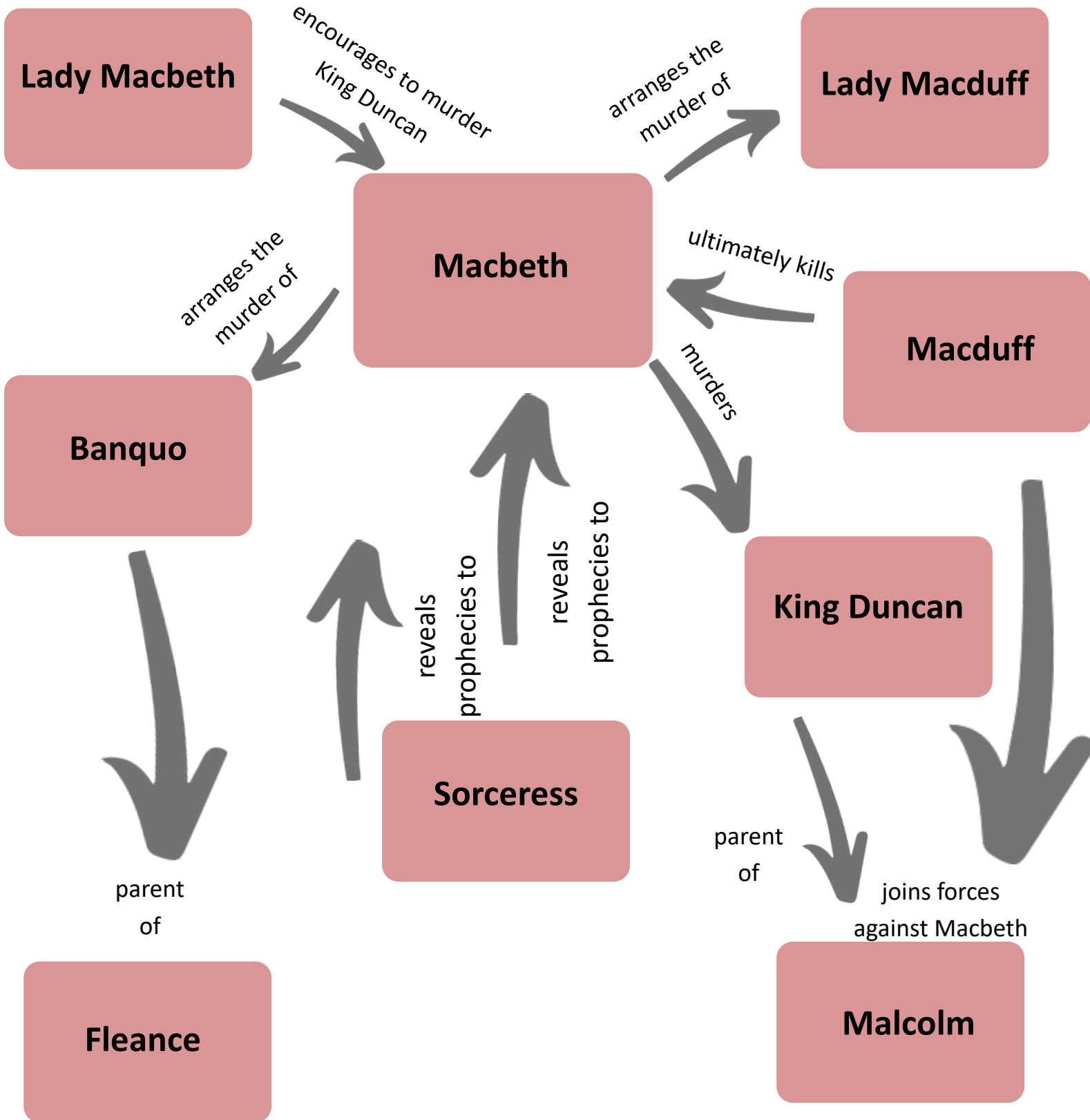
Robbie Jones

Lindsay Pape

Thomas S. Lowe

Jason Brandt

CHARACTER MAP



POST-SHOW DISCUSSION

You are invited to participate in a live, virtual post-show discussion with Nebraska Shakespeare actor/educators after you watch the production. Students are welcome to ask any questions they had about the show including acting, design, the theatre profession, education, etc. Please use the following prompts to help students formulate questions and discussion topics for the conversation.

THEATRE & ACTING

Did you go to school to study acting/theatre?
When did you start working in theatre?
Why did you decide to make it your career?
What is some advice for someone interested in this career?
What are the different careers in the theatre?
How did you discover different character choices?

MACBETH: THE PLAY AND THE PRODUCTION

What is your favorite part of this production?
What has been the most challenging part?
What aspect of Shakespeare's text do you enjoy the most?

